

Fifty Stairs



04	EeStairs
06	Sustainability
08	Excellence
14	Community
17	Residential
51	Commercial
107	Retail
125	Public
148	Ee Worldwide
150	Our Founders



EeStairs make feature stairs of exceptional beauty, precision and structural integrity in Europe, North America and Asia. We work closely with leading architects, interior designers, engineers and high-profile commercial and private clients to produce stairs of outstanding, form, material and technical quality.

EeStairs controls the entire design, manufacture and installation process. We collaborate in taking original concepts and developing them through an in-house detail design and engineering process. We fabricate the stairs according to ISO 9001 and ISO 14001 in our own BREEAM Outstanding accredited factory. We then install the stairs using our own highly experienced installation teams.

We are innovators. Our engineers and in-house software and materials specialists continue to develop sophisticated, and often unique, stair detailing systems. This to ensure that our clients' original designs and specifications will always produce stairs of superb architectural quality – and be a delight to use.

The culture of excellence at EeStairs is driven by a single intensely focused desire: to create Beauty Between Levels.

Cornelis van Vlastuin
Founder, Creative Director



Our BREEAM Outstanding HQ
Powered by 600 solar panels

Achieving Outstanding Sustainability

We are committed to being a sustainable operation, and our headquarters and production facility at Barneveld was the first industrial unit in the Netherlands to be awarded BREEAM Outstanding certification for its sustainability – the organisation’s highest rating.

To achieve BREEAM Outstanding, EeStairs addressed issues ranging from the best possible production and office efficiencies to detailed and effective support of biodiversity around the headquarters site. This led to 100% rubbish recycling, 93% management efficiency, 91% energy efficiency, 87% water use efficiency, and 81% effective land use and biodiversity support. These improvements include the availability of electric bikes for our staff, 600 solar panels, and the use of wood offcuts from our factory to fuel heating units.

Most wood we use in stair-making is FSC-certified and therefore from sustainable species, and when we make stair prototypes we use wood rather than steel. Furthermore, we are making more stairs that are 100% wood and we use lower-pollution glues and paints in the process. Our other pollution-cutting measures include the use of local raw material suppliers whenever possible to minimise transport distances, and we stock large quantities of raw materials, thereby reducing delivery cycles.

One of our latest efficiencies involves a welding robot which makes our ultra-compact 1m2™ by EeStairs staircase automatically. And, where possible, we use recycled materials or low carbon materials in products such as NextGen™ by EeStairs and our GroovEe™ by EeStairs balustrade system.

These improvements in sustainability, via BREEAM, are not static. The ‘Ee’ in EeStairs stands for Exponent of Excellence – which means we are committed to further improvements in the sustainability of our operation, and further reductions in our environmental impacts.





Exponents of Excellence

EeStairs has three centres of operation: our headquarters and production complex at Barneveld in the Netherlands, an office and factory at Brantford, Ontario, 70 miles from the US border, and a design and client support office in the UK.

The physical quality and performance of our stairs is a primary concern, which is why we have an in-house team of engineers, technologists and craftspeople. Our design support team collaborates with clients to take original designs right through to the final design details, and the engineering and construction approvals. In Europe, our sales teams also play an important role, monitoring projects from beginning to end.

Our production plants use high quality equipment, and our fabricators are divided into specialised teams – those who make the metal stair elements, and those who produce the wooden elements. Glass stair and balcony balustrades are fitted by our teams of installers, and wooden balustrades are made and fitted at our stair production plants.

This in-house expertise benefits our international clients, who can discuss any aspect of the design or manufacture of feature stairs directly with EeStairs at any point in the process, rather than have to deal with several separate consultants.

Our facilities and design support ensure that feature stair designs and engineering are fully detailed, precisely executed in our production plants, and securely installed by our own experienced teams on site.





Community Connection

EeStairs values its place in the local communities where it works. We want local people to know what we do, and how we do it.

We are particularly keen to interest local youngsters in what we produce. And this is why we arrange school tours, during which they can safely try techniques such as welding, and watch stairs being made.

Sport is another way we connect with the community, by supplying kits to local teams. We also invite the over-65s to tour our facilities as a social activity, and hold Open Days to welcome visitors.

One of our most important community initiatives involves working with a network of other businesses to provide in-house educational sessions: students who are studying engineering or materials can visit EeStairs and gain a Diploma that will support their school exam subjects. Among the projects they can take part in is the creation of a scaled-down 1m2™ by EeStairs staircase.

We also emphasise environmental sustainability: we invite groups of schoolchildren to come to our headquarters and, under supervision, use leftover materials to build small structures.

These kinds of activities, combined with our four-day 'school' sessions, increases students' interest in the engineering and craft of stairmaking – and we hope some of them will eventually join the team at EeStairs.

Residential

- 18 15 Hudson Yards, New York [US]
- 20 Cooper Barrel, New York [US]
- 22 Little C, Rotterdam [NL]
- 24 MS Northlander
- 28 Orum Road, Bel Air, Los Angeles [US]
- 32 Pierre Plantée, Saint-Tropez [FR]
- 36 Poincare, Paris [FR]
- 38 Quinta do Lago, Algarve [PT]
- 40 Residence, Le Havre [FR]
- 42 Scollard Street, Toronto [CA]
- 44 Shikin, Moscow [RU]
- 46 Toison d'or, Brussels [BE]
- 48 Van Gaal, Amsterdam [NL]



EeStairs + Diller Scofidio + Renfro + Ismael Leyva
15 Hudson Yards, New York [US]



EeStairs + Robert Kahn Architect
Cooper Barrel, New York [US]

EeStairs + FW55 + Tank
Little C, Rotterdam [NL]



EeStairs + Art-line Interiors B.V.
MS Northlander



EeStairs + Art-line Interiors B.V.
MS Northlander

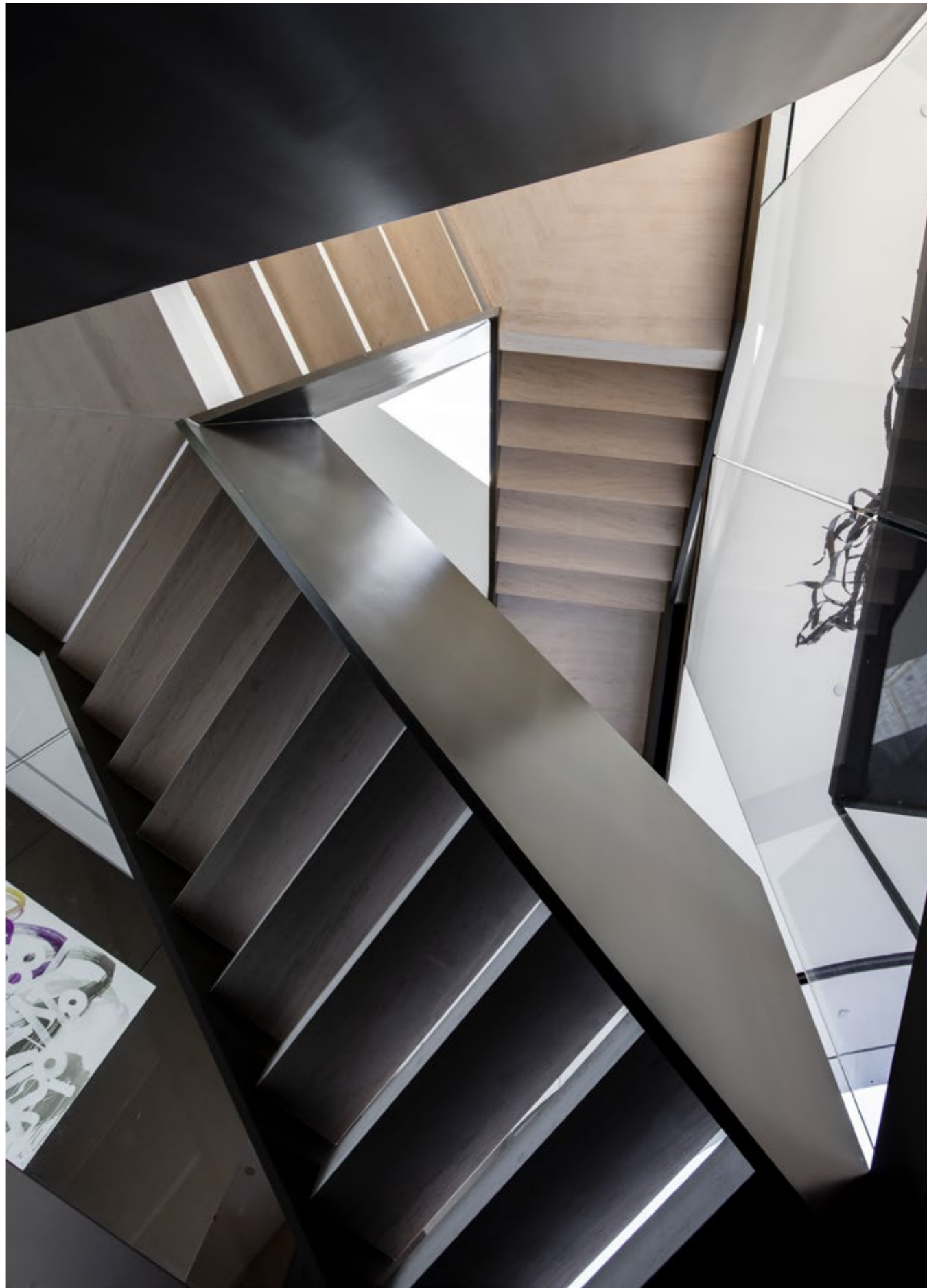




EeStairs + SPF:architects
Orum Road, Bel Air, Los Angeles [US]



EeStairs + SPF:architects
Orum Road, Bel Air, Los Angeles [US]

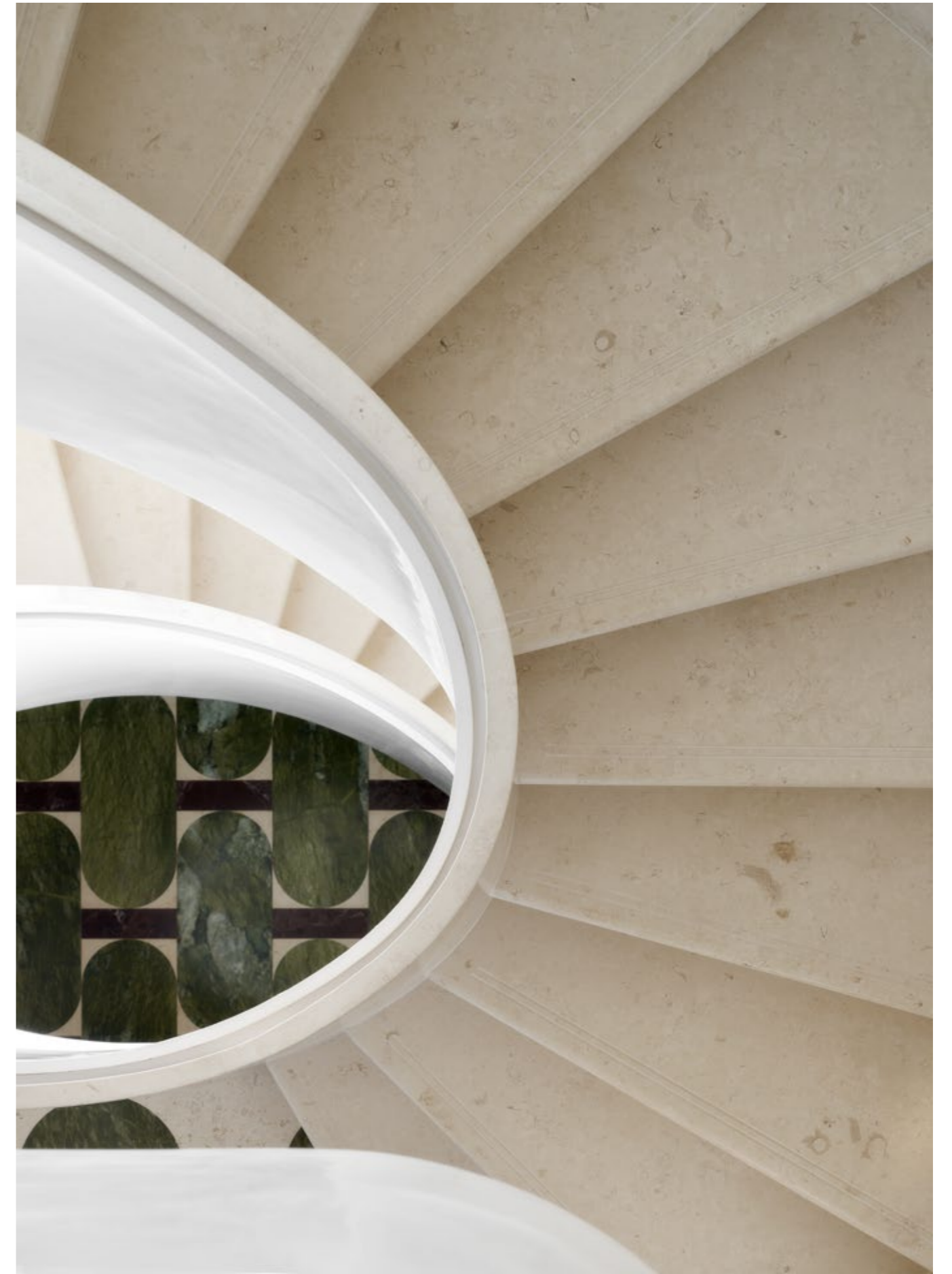




EeStairs + Peter Mikic
Pierre Plantée, Saint-Tropez [FR]



EeStairs + Peter Mikic
Pierre Plantée, Saint-Tropez [FR]



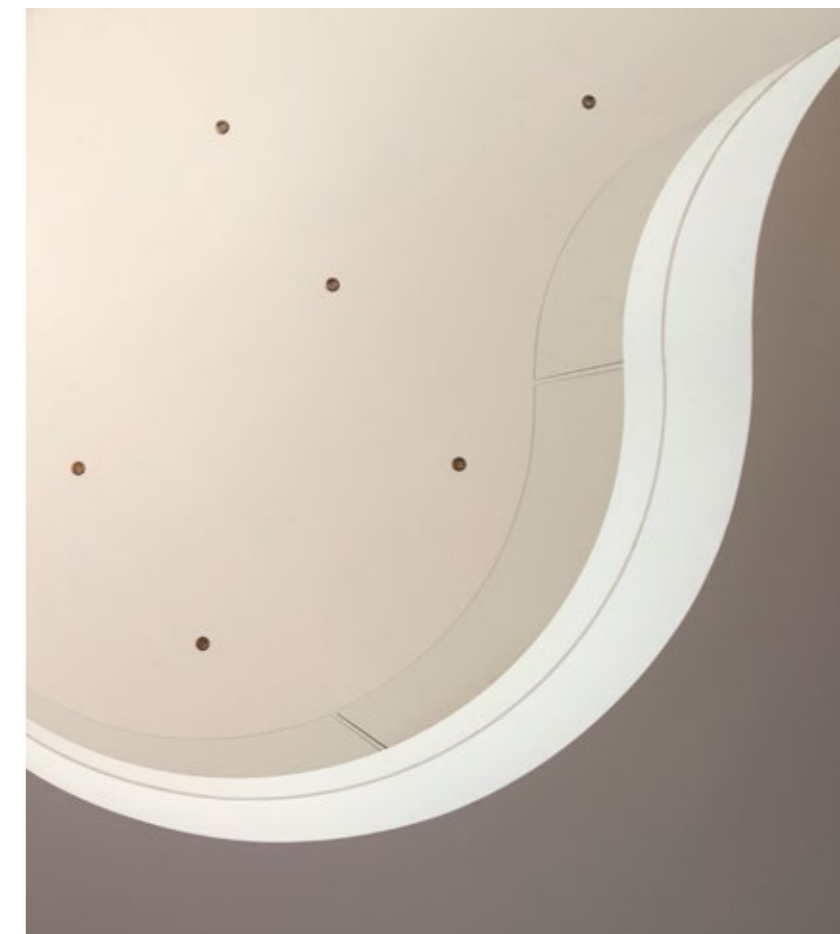


EeStairs + ART QAD
Poincare, Paris [FR]



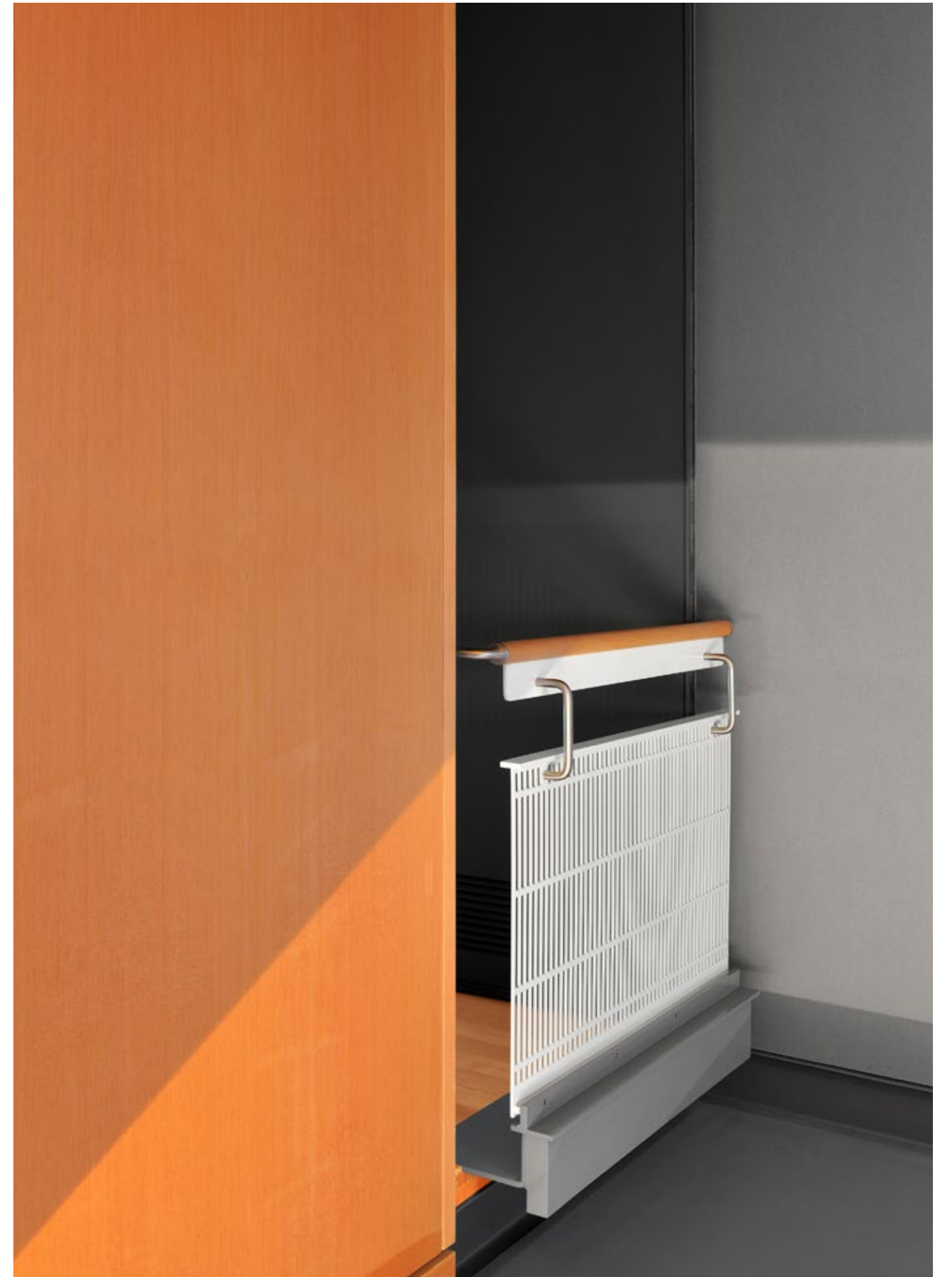


EeStairs + Stewart Seaton Arquitecto
Quinta do Lago, Algarve [PT]



EeStairs + Jean Michel Thibaux Architecte
Residence, Le Havre [FR]





EeStairs + Shim-Sutcliffe Architects
Scollard Street, Toronto [CA]



EeStairs + Johann und Eck
Architekten – Ingenieure GbR
Shikin, Moscow [RU]



EeStairs + UNStudio + Jaspers-Eyers Architects
Toison d'or, Brussels [BE]



EeStairs + DIS Studio +
Rappange & Partners Architecten
Van Gaal, Amsterdam [NL]

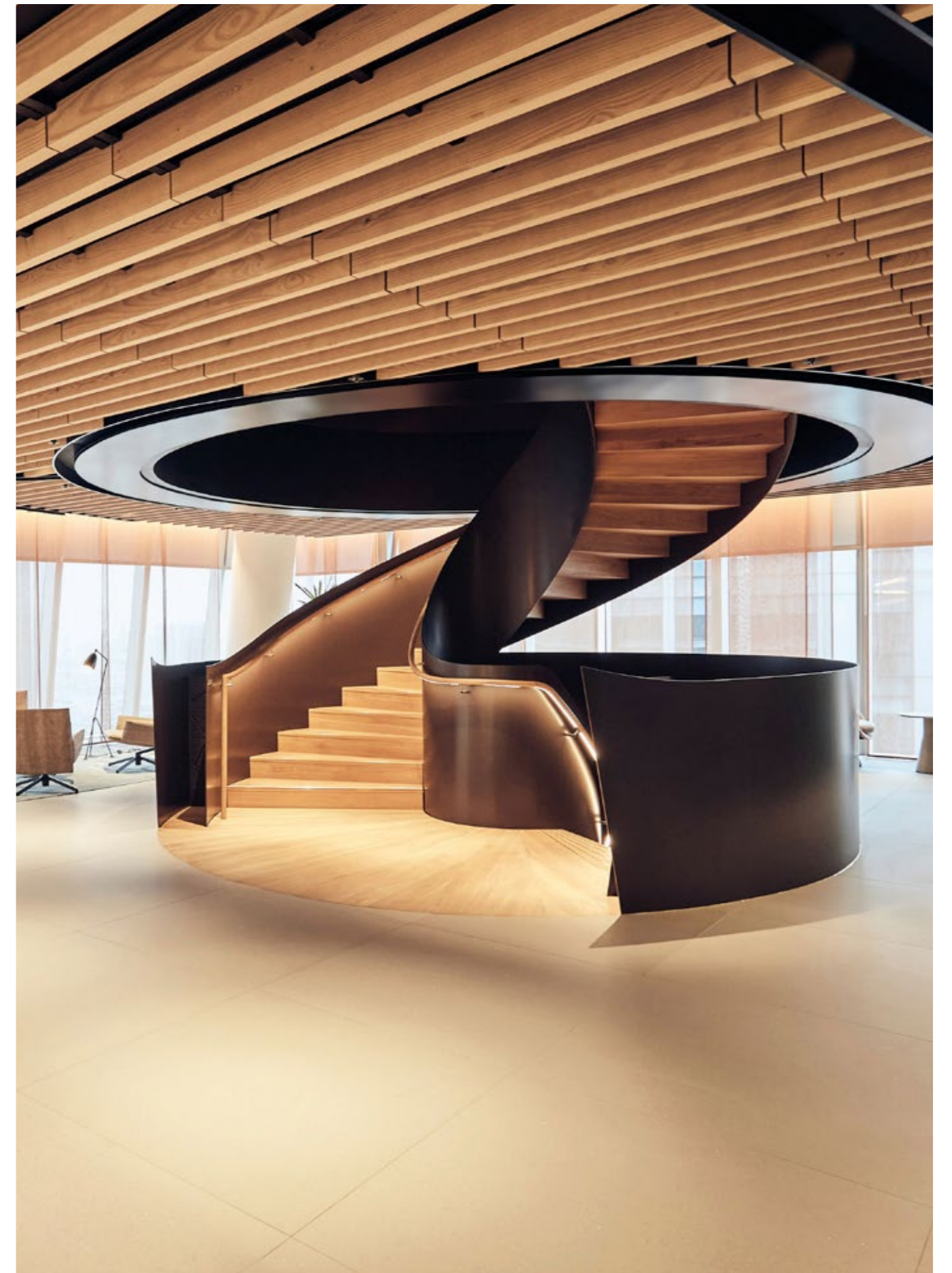


Commercial

52	100 Bishopsgate, London [GB]
54	Akzo Nobel, Amsterdam [NL]
56	Bata Shoe Factory, Batawa, Ontario [CA]
58	Bird & Bird, London [GB]
60	Capital One, London [GB]
62	CitizenM, Rotterdam [NL]
64	De Eekhoorn, Zwaag [NL]
66	Eosta, Waddinxveen [NL]
68	G-Star HQ, Amsterdam [NL]
70	Gusto MSC, Schiedam [NL]
72	Havenhuis, Antwerpen [BE]
76	Novartis Pharma, Rueil-Malmaison [FR]
78	OC&C, Rotterdam [NL]
80	One Bank Street, Canary Wharf, London [GB]
82	One Blackfriars Hotel, London [GB]
84	Pericles, Brussels [BE]
88	PON Holding, Almere [NL]
92	Royal Dutch Gazelle, Dieren [NL]
94	Tilsitt, Paris [FR]
98	The Bank, Amsterdam [NL]
100	Vreugdenhil, Nijkerk [NL]
104	Westland Infra, Poeldijk [NL]



**EeStairs + ID:SR Sheppard Robson +
Brinkworth**
100 Bishopsgate, London [GB]



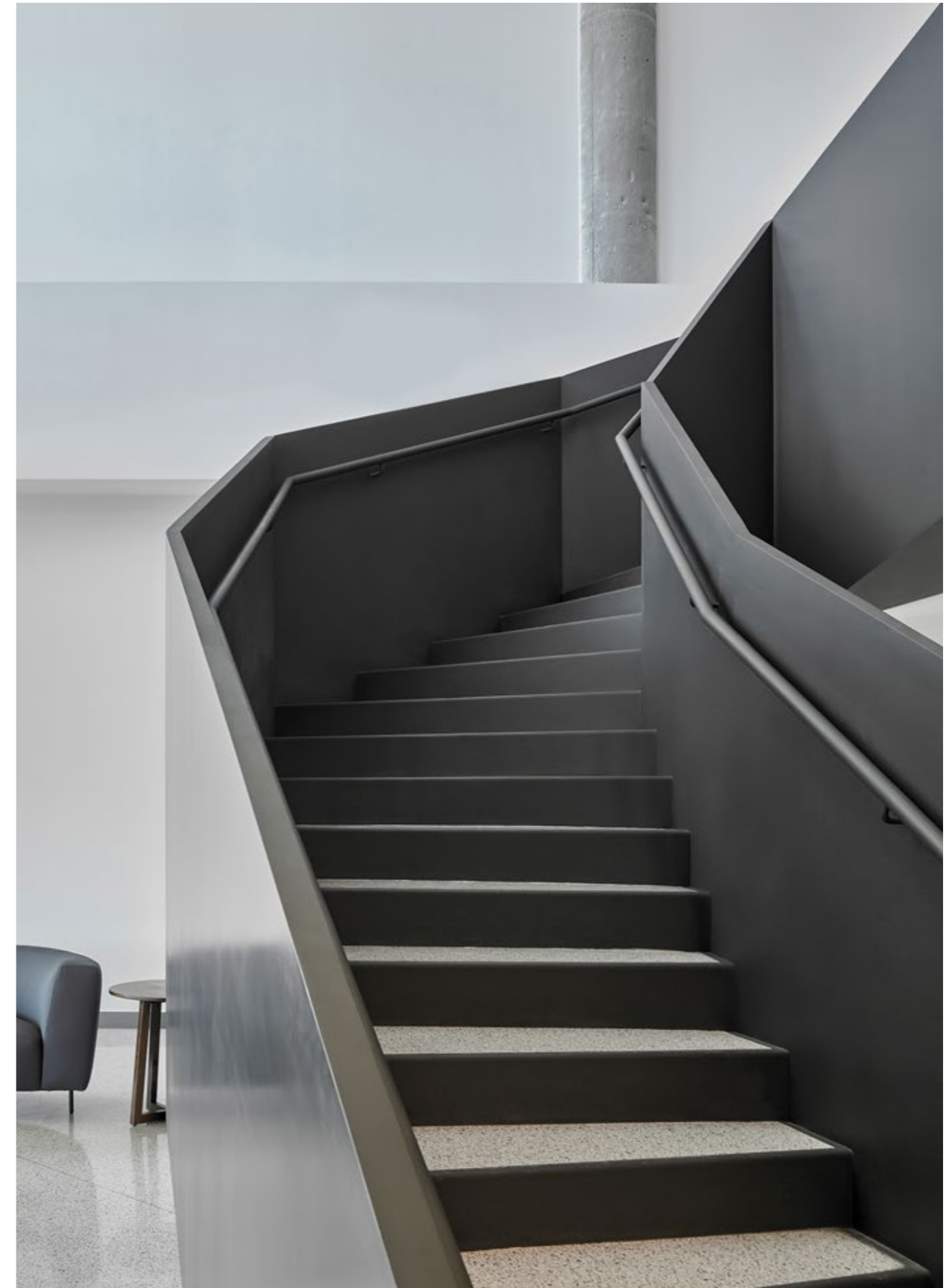


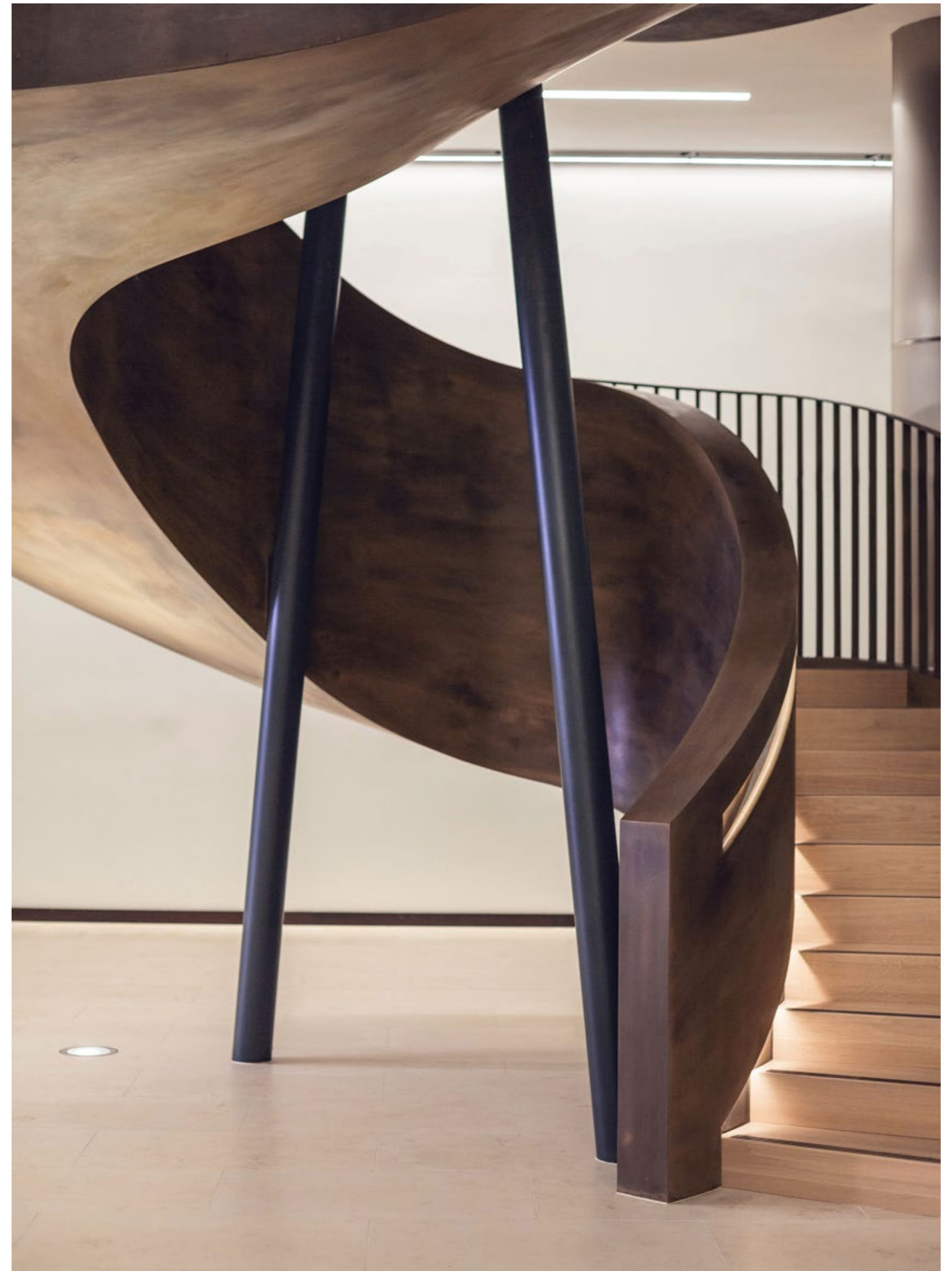
EeStairs + GroupA
Akzo Nobel, Amsterdam [NL]



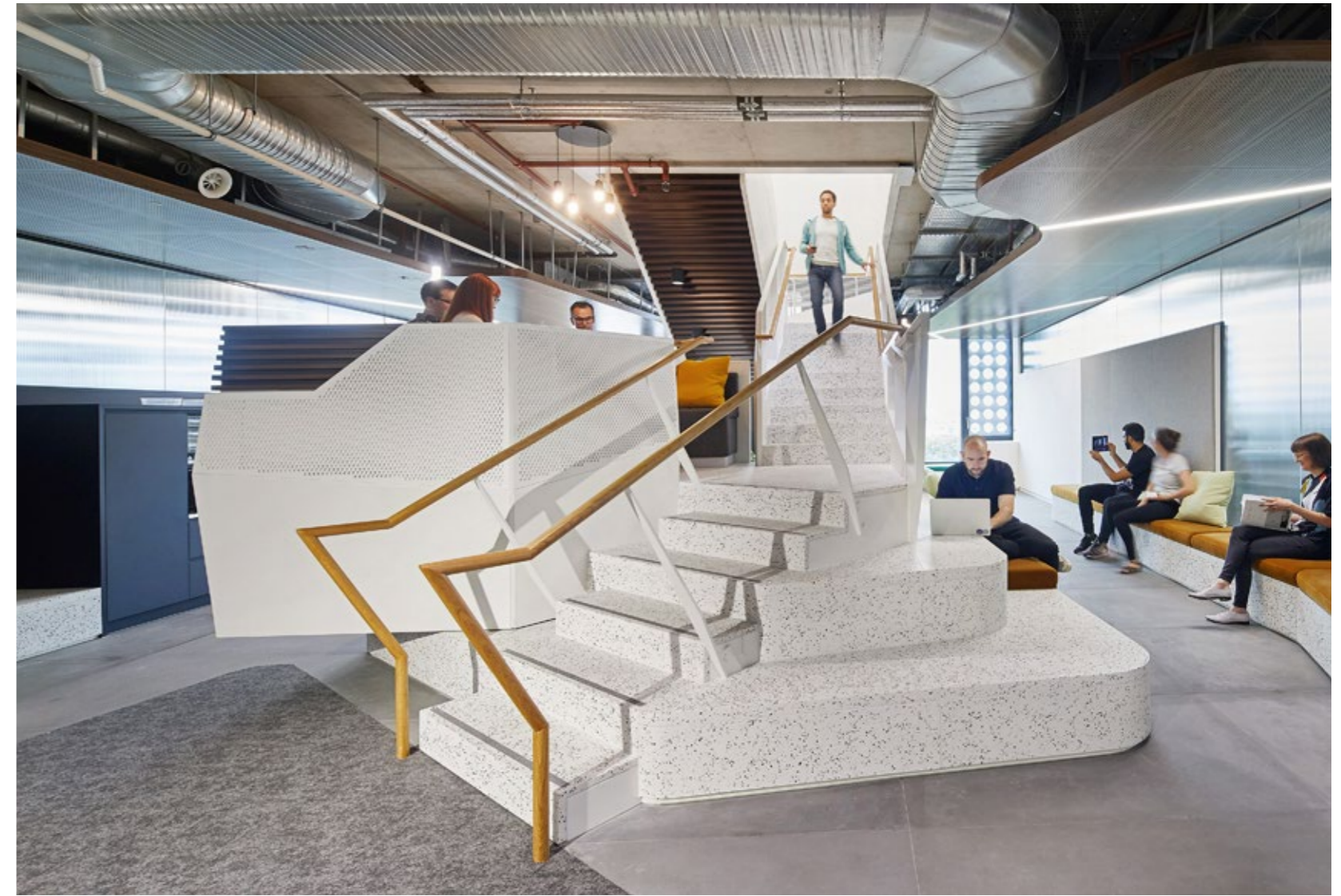


EeStairs + Dubbeldam Architecture
Bata Shoe Factory, Batawa, Ontario [CA]





**EeStairs + MCM Architecture +
Wheeler Group**
Bird & Bird, London [GB]



EeStairs + AHMM + Arup
Capital One, White Collar Factory, London [GB]

EeStairs + Concrete + ZZDP Architecten
CitizenM, Rotterdam [NL]

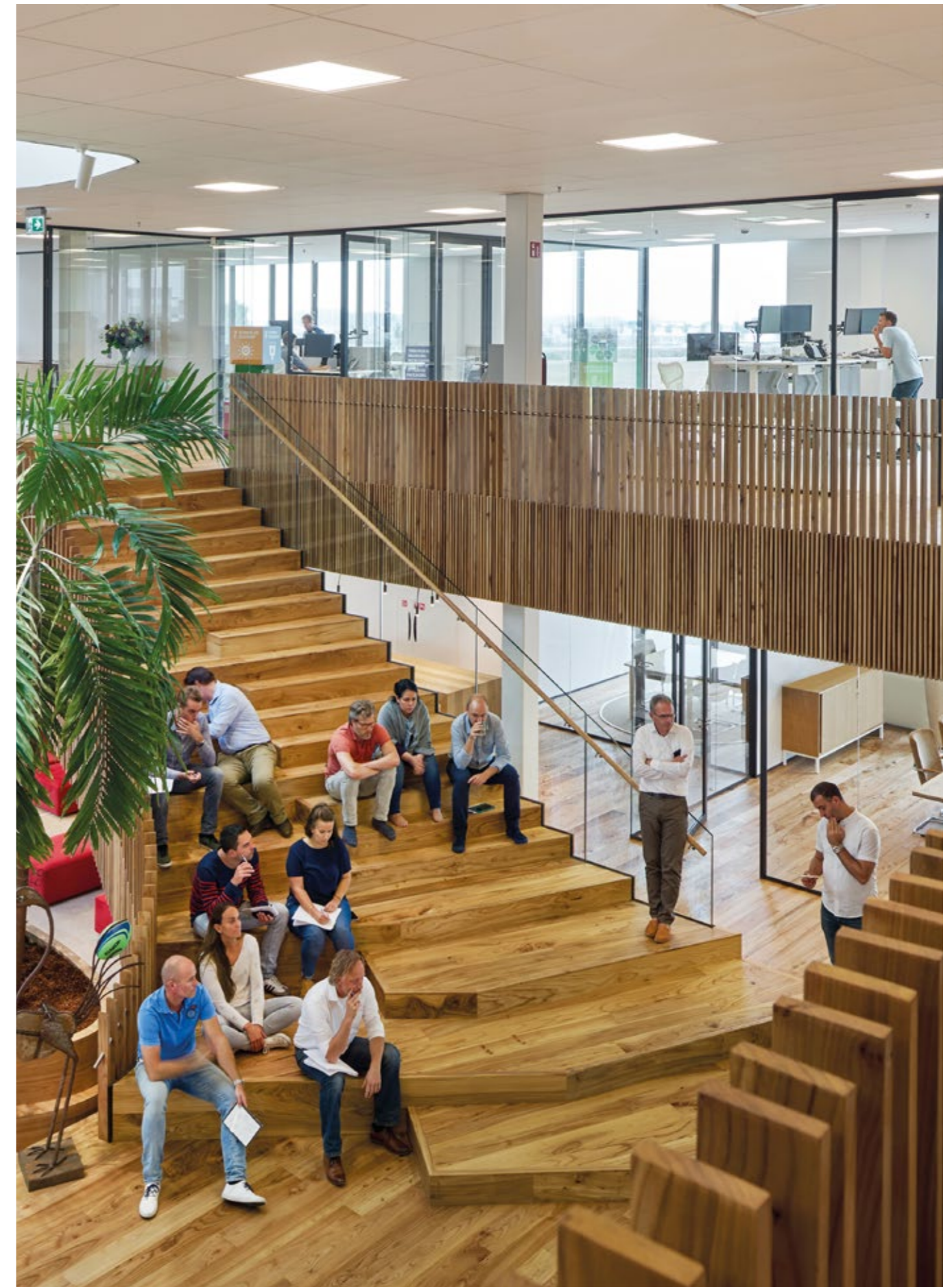




EeStairs + Breg Ontwerp +
Bouw Contractors West
De Eekhoorn, Zwaag [NL]



EeStairs + Rau Architecten + Ex Interiors
Eosta, Waddinxveen [NL]





EeStairs + OMA
G-Star HQ, Amsterdam [NL]



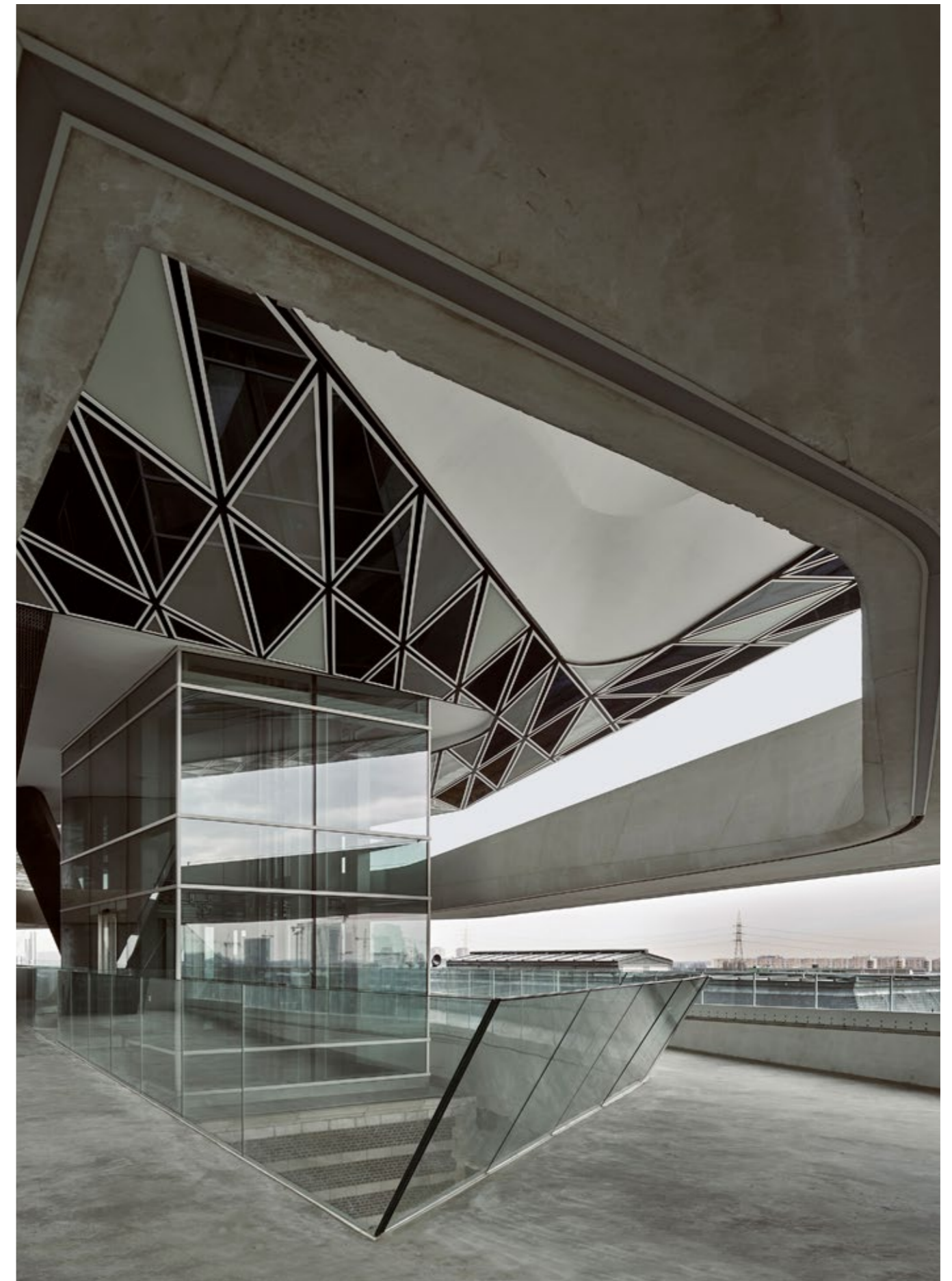
EeStairs + JHK Architecten
Gusto MSC, Schiedam [NL]



EeStairs + Zaha Hadid Architects +
Bureau Bouwtechniek
Havenhuis, Antwerpen [BE]



**EeStairs + Zaha Hadid Architects +
Bureau Bouwtechniek**
Havenhuis, Antwerpen [BE]





EeStairs + Quadri Fiore + Jim Clemes
Novartis Pharma, Rueil-Malmaison [FR]





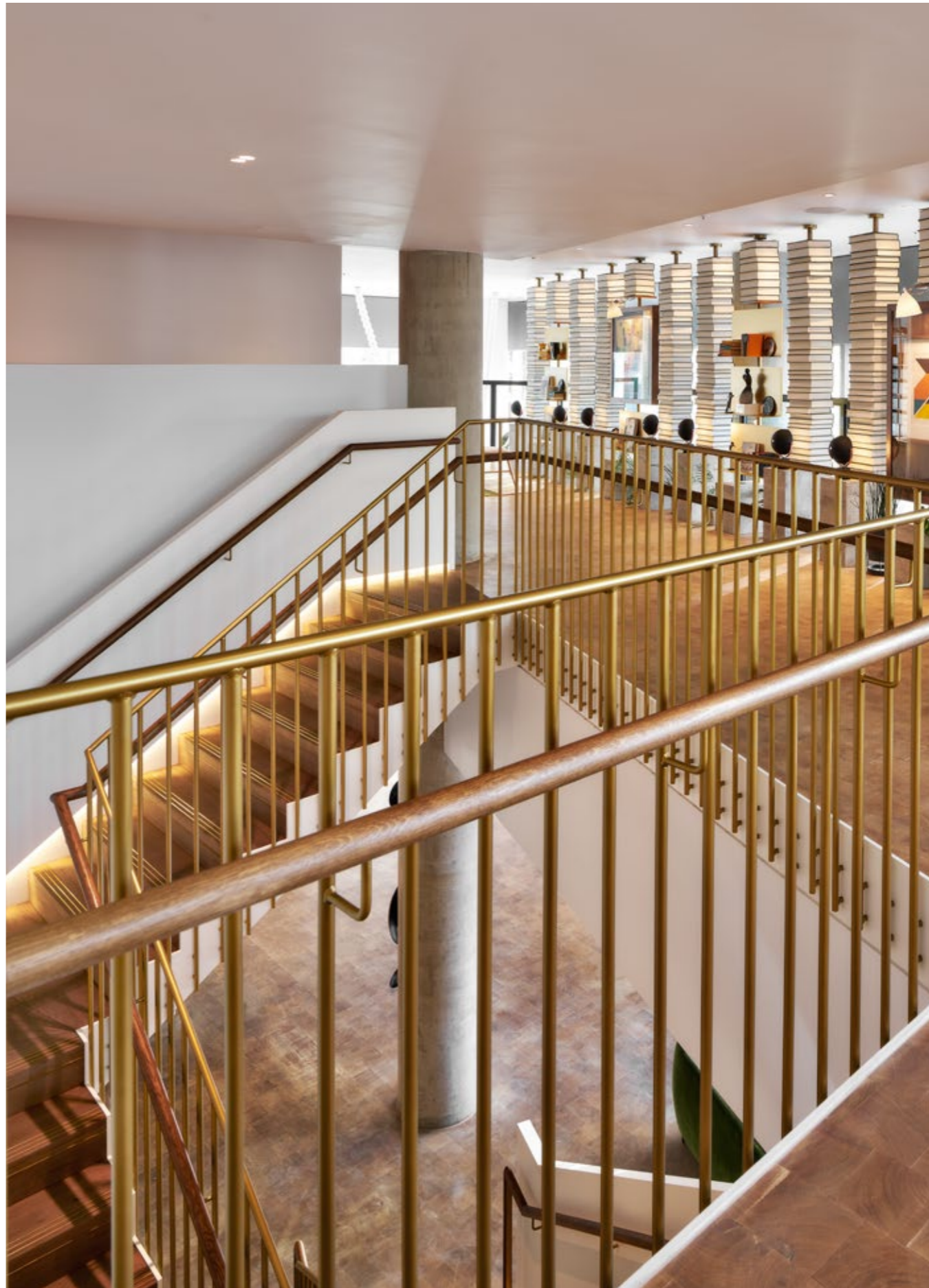
A photograph of a modern building's interior. The central focus is a large, white, curved staircase that spirals upwards. The staircase is surrounded by glass railings. To the left, there is a large glass facade with a white structural frame. The floor is made of light-colored, polished stone tiles. The ceiling is white with recessed lighting. The overall atmosphere is bright and modern.

EeStairs + Canary Wharf Group +
ip bennett + Adamson Associate Architects
One Bank Street, Canary Wharf, London [GB]



**EeStairs + Powerstrip Studio +
Simpson Haugh Architects**

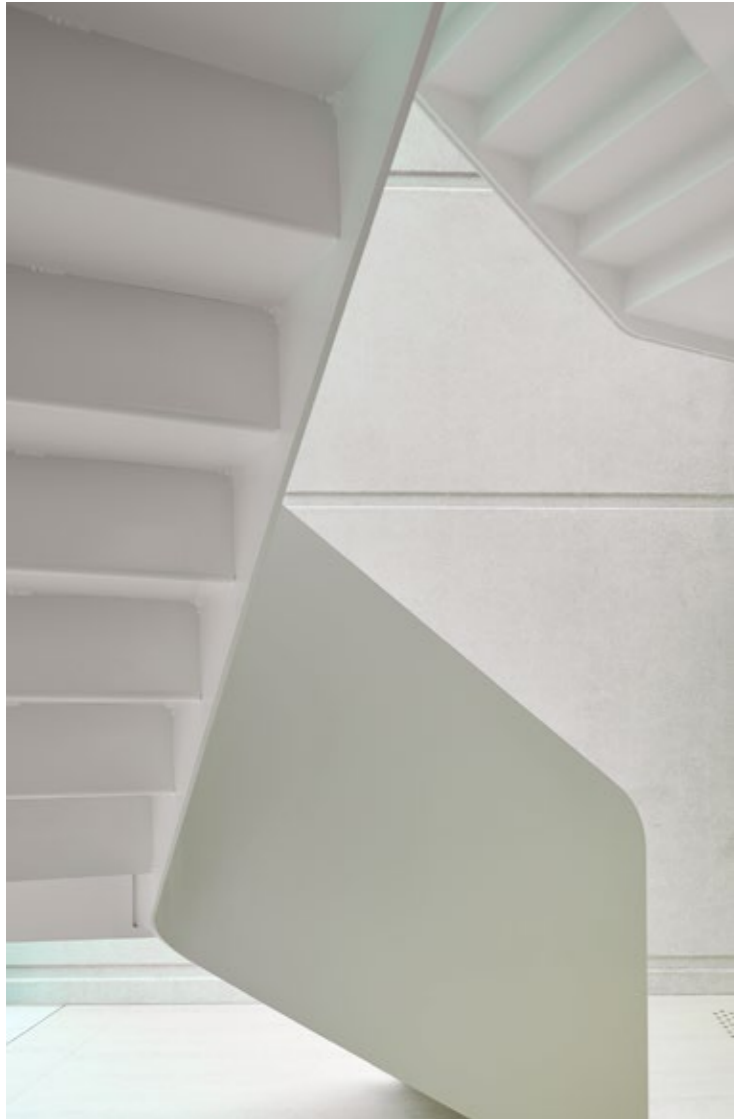
One Blackfriars Hotel, London [GB]



EeStairs + Vorm Interieurgroep
Pericles, Brussels [BE]



EeStairs + Vorm Interieurgroep
Pericles, Brussels [BE]





EeStairs + QuA Associates bv
PON Holding, Almere [NL]

EeStairs + QuA Associates bv
PON Holding, Almere [NL]



EeStairs + Bronsvort Blaak Architecten
Royal Dutch Gazelle, Dieren (NL)









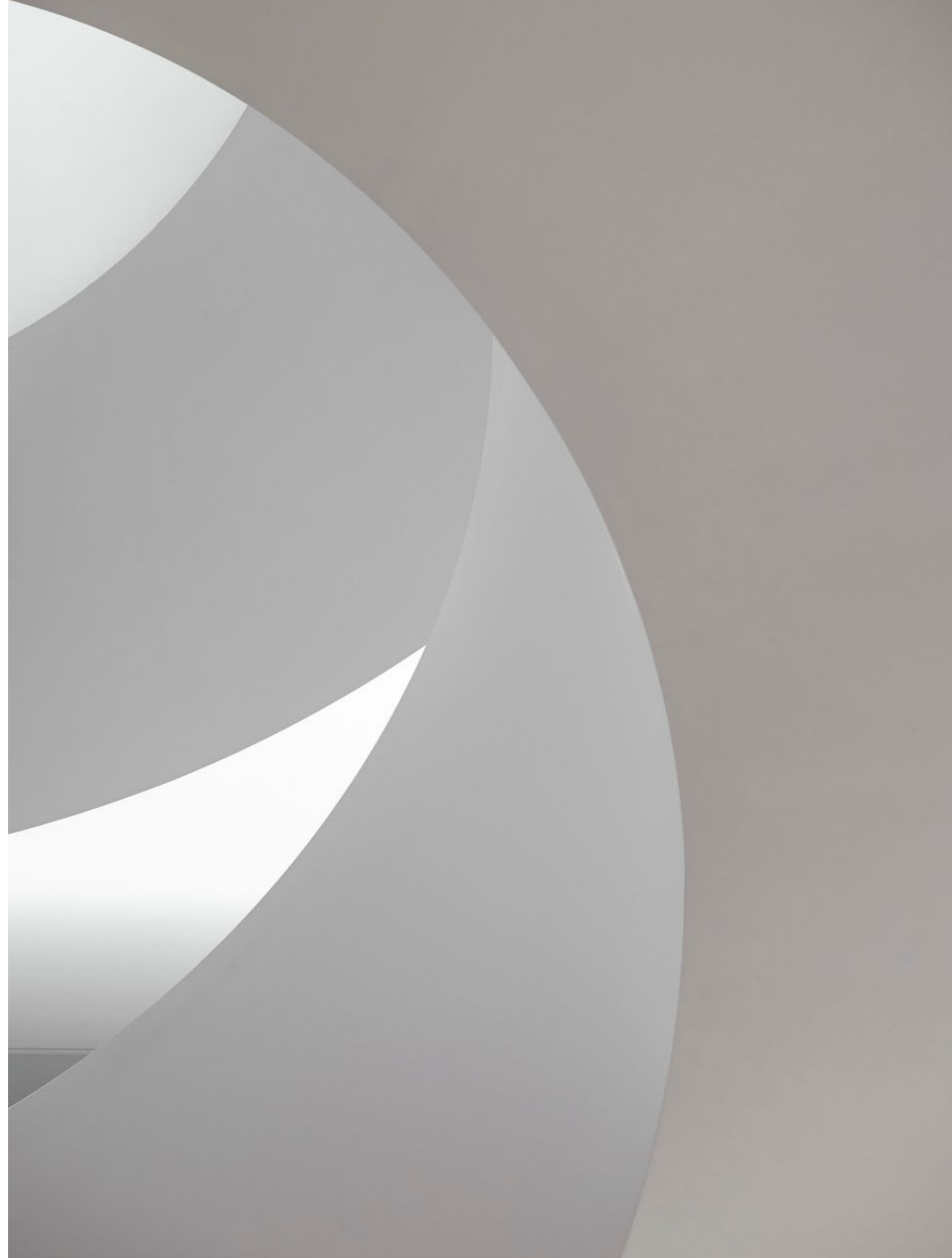
EeStairs + Cushman & Wakefield
The Bank, Amsterdam [NL]

EeStairs + Maas Architecten + SOM Oldenzaal
Vreugdenhil, Nijkerk [NL]





EeStairs + Maas Architecten + SOM Oldenzaal
Vreugdenhil, Nijkerk [NL]





EeStairs + Op ten Noort Blijdenstein
Westland Infra, Poeldijk [NL]

Retail

- 108 Emporio Armani, Amsterdam [NL]
- 110 Hermès, Toronto [CA]
- 112 Lacoste, London [GB]
- 114 Longchamp, Liege [BE]
- 116 Nike, Utrecht [NL]
- 118 Tara Jarmon, Paris [FR]
- 120 Victoria's Secret, New York [US]

EeStairs + Giorgio Armani
Emporio Armani, Amsterdam [NL]



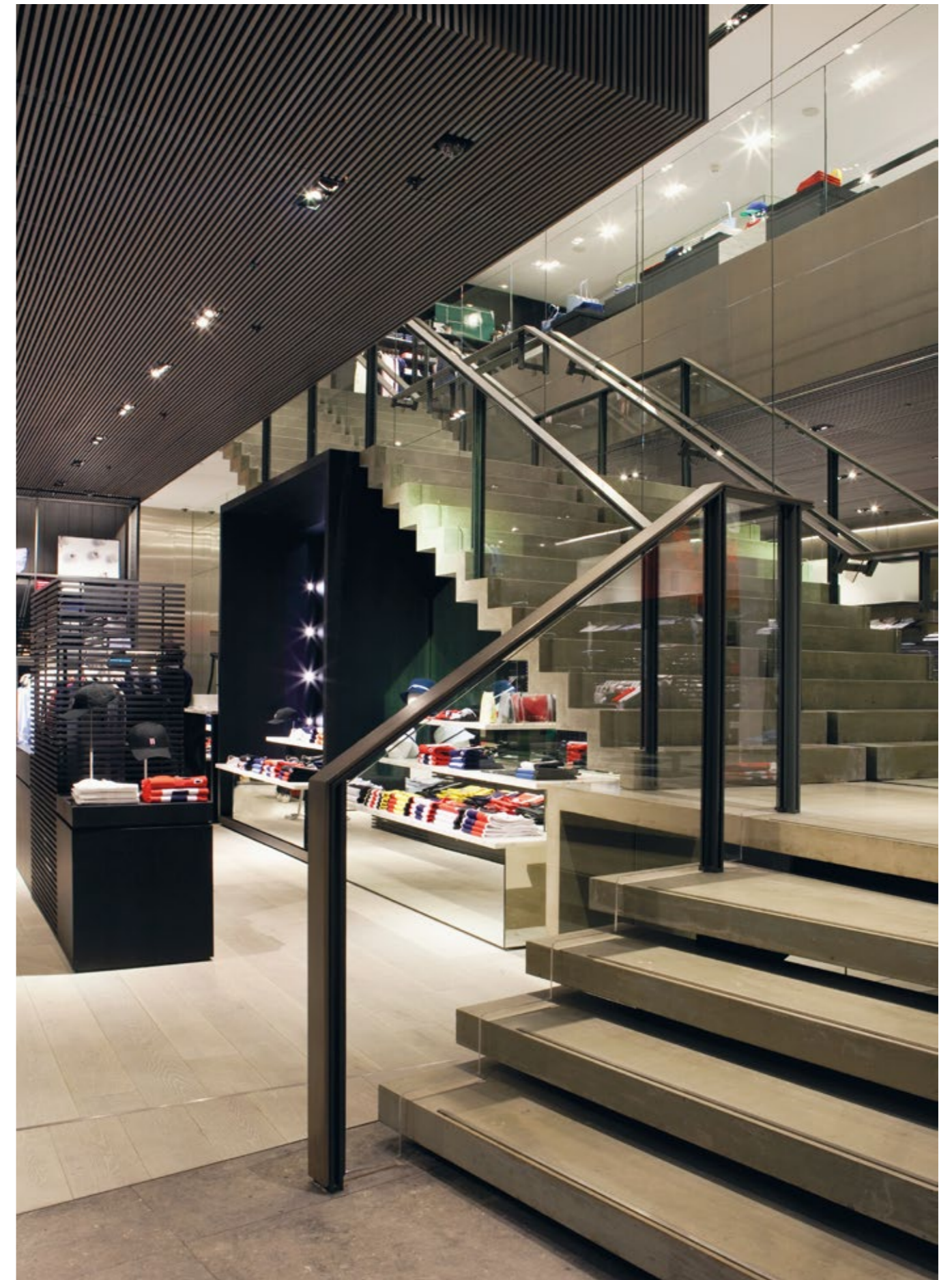


EeStairs + RDAI
Hermès, Toronto [CA]





EeStairs + designLSM + Dillon Garis
Lacoste, London [GB]





EeStairs + Marcel Boom nv/sa
Longchamp, Liege [BE]





EeStairs + Claessens Erdmann
Nike, Utrecht [NL]



EeStairs + Archit'EQ
Tara Jarmon, Paris (FR)





EeStairs + LBrands
Victoria's Secret, New York [US]



EeStairs + LBrands
Victoria's Secret, New York [US]

Public

- 126 Apostolisch Genootschap, Rotterdam [NL]
- 128 Centraal Museum, Utrecht [NL]
- 130 De Resident, Den Haag [NL]
- 132 Goois Museum, Hilversum [NL]
- 134 Historisch Centrum Overijssel, Zwolle [NL]
- 136 Koningin Elisabethzaal, Antwerpen [BE]
- 140 Museum of the Image, Breda [NL]
- 144 V&A Museum, London [GB]

EeStairs + Terrena Architecten
Apostolisch Genootschap, Rotterdam [NL]



EeStairs + Soda Plus
Centraal Museum, Utrecht [NL]



EeStairs + Cepezed
De Resident, Den Haag [NL]



**EeStairs + de Architectengroep +
Hans Ruijsenaars Architecten**
Goois Museum, Hilversum [NL]

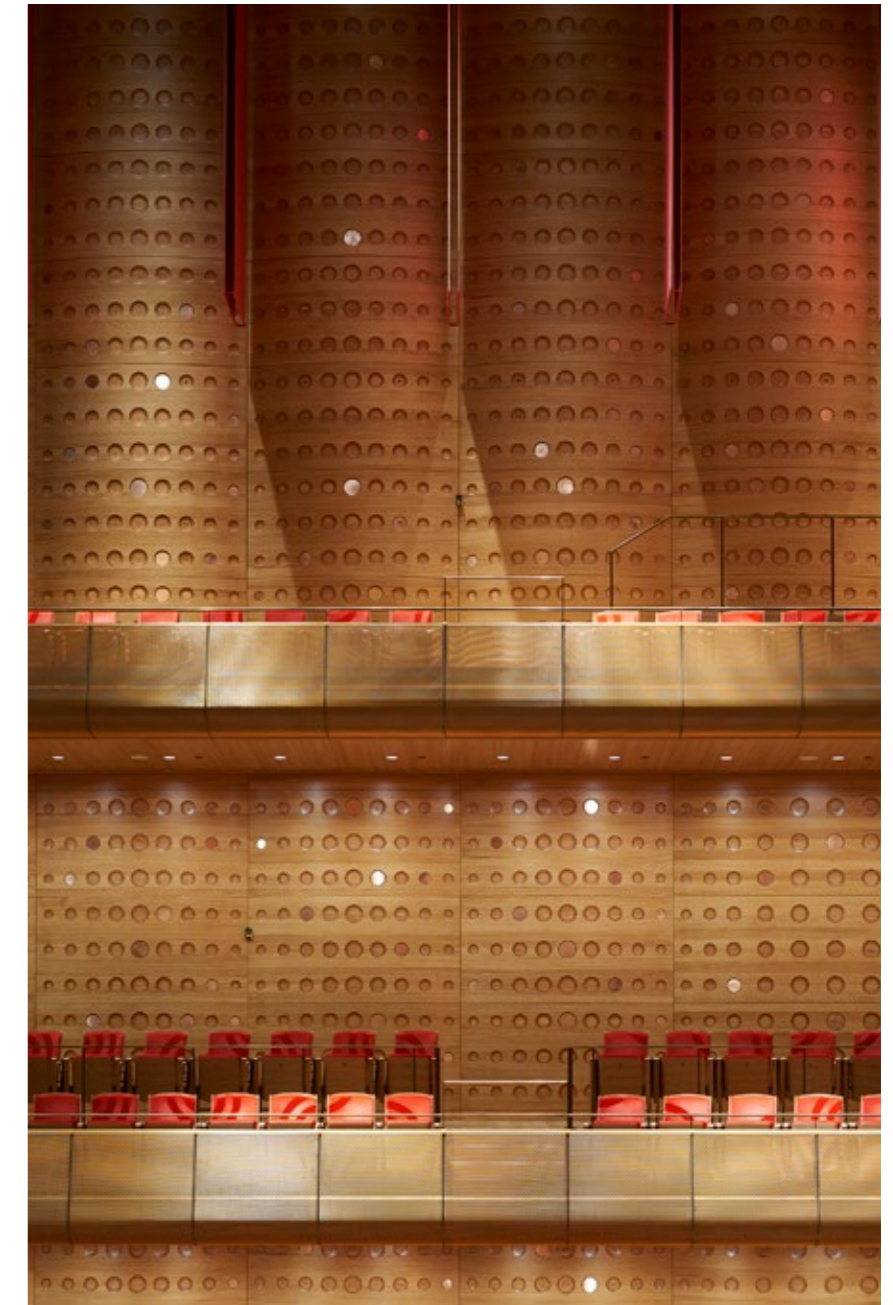




EeStairs + 19 Het Atelier
Historisch Centrum Overijssel, Zwolle [NL]



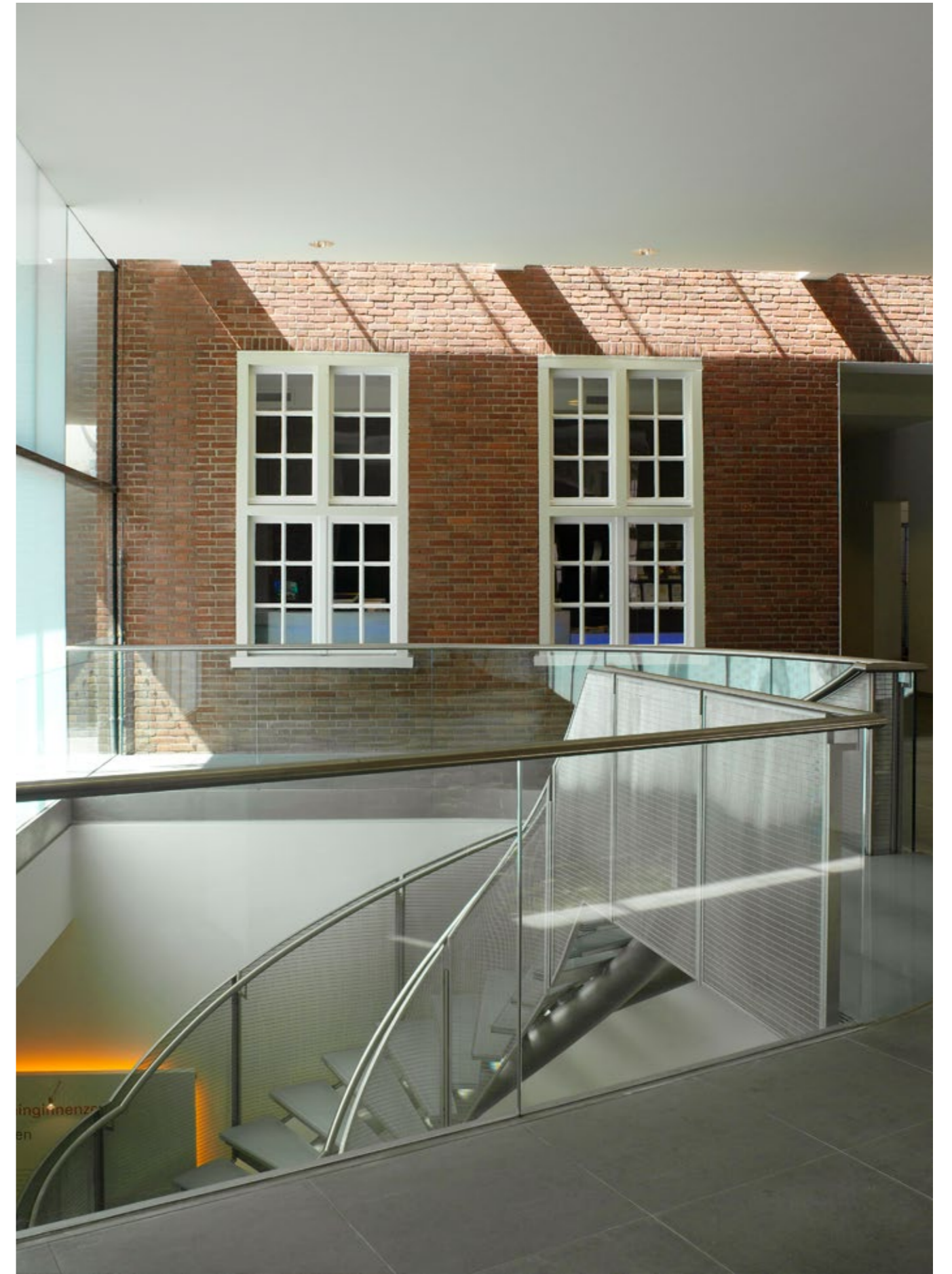
**EeStairs + Bureau Bouwtechniek +
Simpson Haugh Architects**
Koningin Elisabethzaal, Antwerpen [BE]





EeStairs + Hans van Heeswijk Architecten
Museum of the Image, Breda [NL]





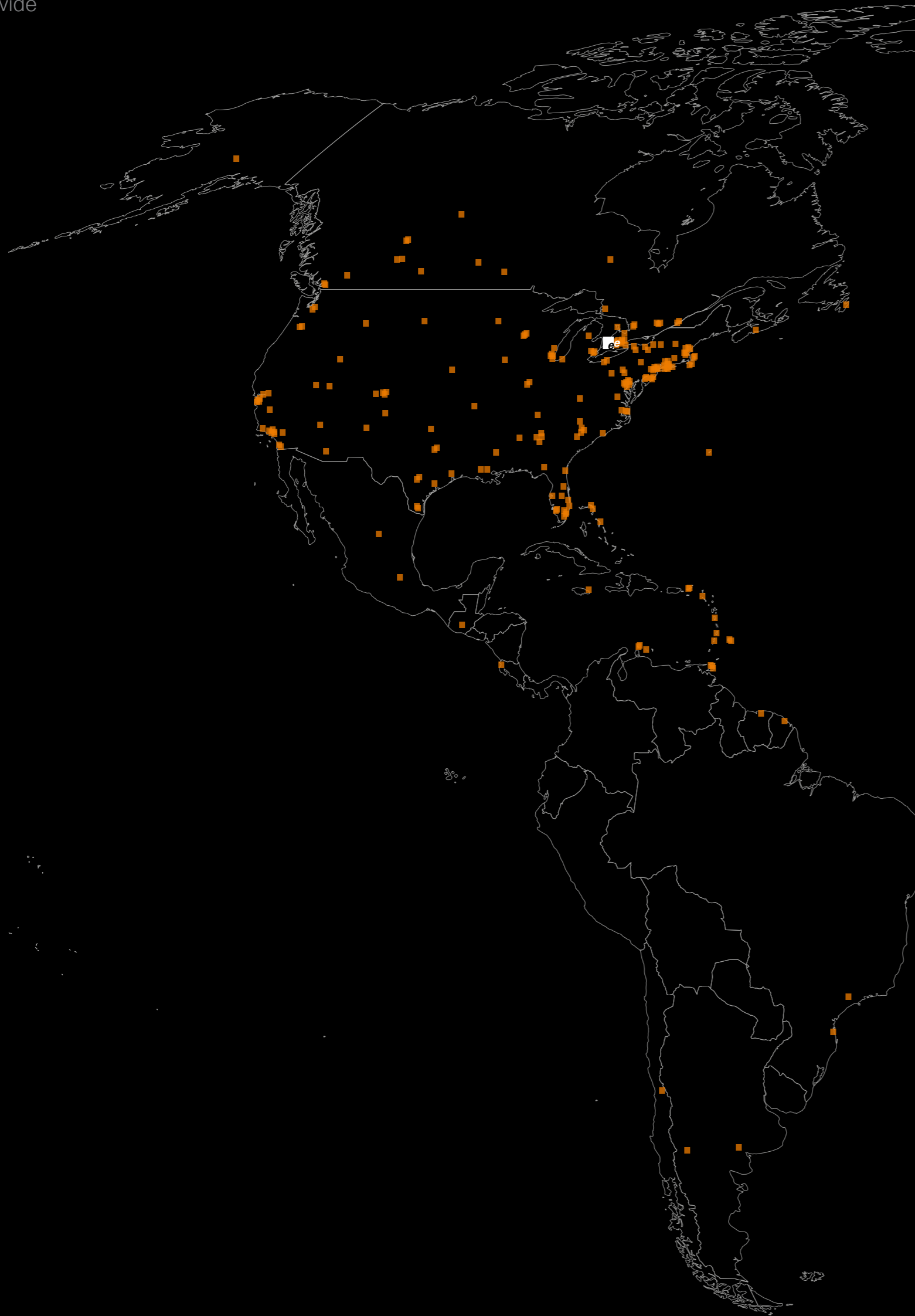
EeStairs + Hans van Heeswijk Architecten
Museum of the Image, Breda [NL]

EeStairs + AL_A + Wates Group
V&A Museum, London [GB]





EeStairs + AL_A + Wates Group
V&A Museum, London [GB]



HQ, The Netherlands & Export

Cornelis van Vlastuin
Founder, Creative Director

EeStairs Nederland bv
+31 342 405700
nl@eestairs.com



HQ, The Netherlands & Export

Martijn Cluistra
Operational Co-Director

EeStairs Nederland bv
+31 342 405700
nl@eestairs.com



France, Monaco, Suisse

Gwenaël Payen
Conseiller principal en escaliers

EeStairs FR
+33 4 69 12 60 80
fr@eestairs.com



USA & Canada

Nathan Koppelaar
Creative Director

EeStairs America Inc.
+1 (226) 381 0111
info@eestairs.com



USA & Canada

Brendan Koppelaar
Operational Director

EeStairs America Inc.
+1 (226) 381 0111
info@eestairs.com



France, Monaco, Suisse

Florian Lagarde
Directeur des Ventes

EeStairs FR
+33 4 69 12 60 80
fr@eestairs.com



United Kingdom

Steve Bray
Director

EeStairs UK Ltd
+44 5603 750 880
uk@eestairs.com



United Kingdom

Oliver Schneider
Country Director

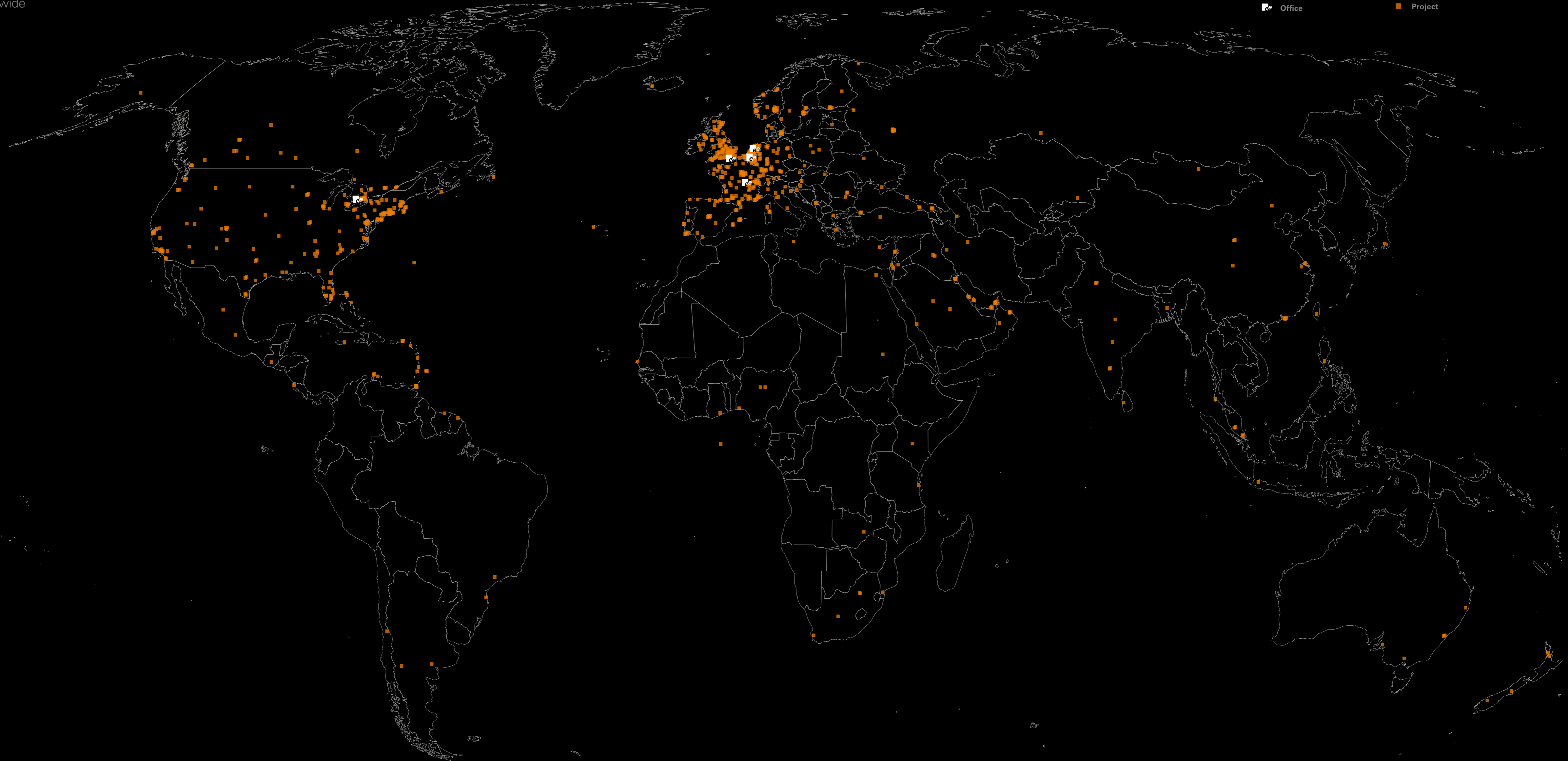
EeStairs UK Ltd
+44 5603 750 880
uk@eestairs.com



Belgium

Mark Geerts
Sales Agent

EeStairs BE
+32 15 79 12 20
be@eestairs.com



Our Founders



Cornelis van Vlastuin
Founder, Creative Director [NL]
+31 342 405710
CvV@eestairs.com

Cornelis van Vlastuin is the Creative Director of EeStairs. Under his leadership, the company produces exquisitely elegant and visually exciting staircases through a process of continuous imagination and innovation.

And this has provided designers and other professional specifiers with the widest possible range of stair-tread options. Cornelis' visionary approach is balanced by his past entrepreneurial and management experience, and his insights into software programming.

His unusually broad skills, and his international outlook, have led to award-winning stairs and the creation of several unique patented or registered stair products.



Dick Cluistra
Founder, Operations Director [NL]
+31 342 405720
DC@eestairs.com

Dick Cluistra spent many years working in the steel and construction industry at senior management level before co-founding EeStairs. He has a broad expertise in the design and production of stairs.

As Operations Director and stair specialist at EeStairs, he ensures that the right decisions are made on important points in the design and production of stairs, so that great design and state-of-the-art innovations are shown to the fullest.

Dick is constantly looking for ways to further streamline the stair design and manufacturing process using technological and software innovations to ensure that stairs are perfectly executed and installed.

Photography

Arnal
Frank Herfort
Hans Morren
Hufton + Crow
James French
Jonneke Oskam
Leigh Simpson
Luc Boegly
Matthew Momberger
Michael Moran
Richard Powers
Rob Melchior
Scott Norsworthy
Solk Photography
Soren Kristensen
Wouter van Twillert

Design

Aloof Studio

Print

NPN Printing

ISBN

978-90-90346-87-8

© 2022 EeStairs

All rights reserved

